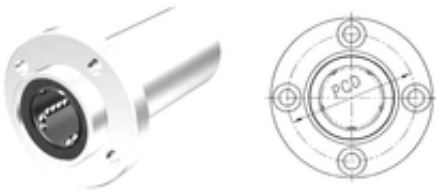


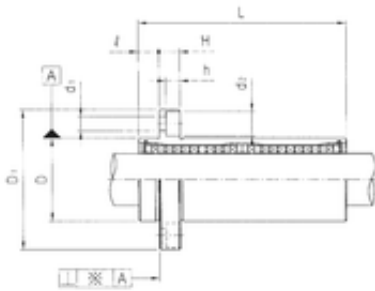


# Timken Bearing Company



## Samick LMFP6L Linear bearing

Bearing No. LMFP6L



LMFP6L Bearing 2D drawings and 3D CAD models

Bore Diameter	6 mm
Outer Diameter	12 mm
d	6 mm
D	12 mm
d1	3,4 mm
d2	6,5 mm
h	3,3 mm
D1	28 mm
H	5 mm
L	35 mm
PCD	20 mm
	5 Tolerance h14
Tolerance perpendicularity (C)	15
Weight	0,031 Kg
Basic dynamic load rating (C)	0,32 kN