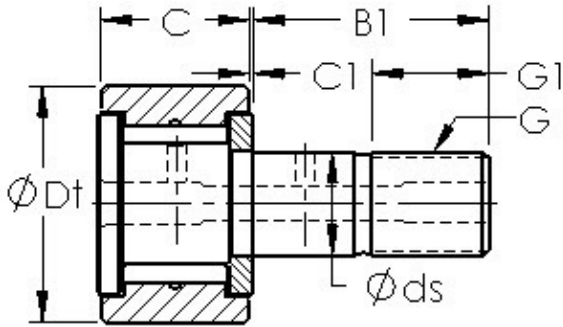




# Timken Bearing Company



## AST CF64 Needle bearing

Bearing No. CF64

Bearing Type	Full Complement
Dynamic Load Rating (Cr)	21,400
Static Load Rating (Cor)	55,000
Max Speed (Grease) (X1000 RPM)	1,300
Tire Outer Dia. (Dt)	4.000
Stud Dia. (ds)	1.500
Tire Width (C)	2.250
Tire Washer Width (C1)	0.031
Total Length (B)	5.780
Stud Length (B1)	3.500
Threads (G) - 1-1/2-12UNF	11/212UNF
Thread Length (G1)	1.5
Weight (g)	4,225.00
Material - Stud and Roller head: Hardened carbon steel alloy, Needle rollers	52100 Chrome steel or equivalent

CF64 Bearing 2D drawings and 3D CAD models