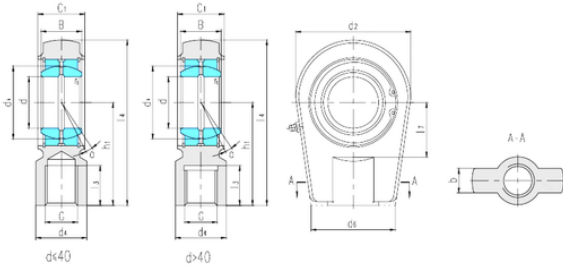




Timken Bearing Company



LS SIRN60ES sliding bearing

Bearing No. SIRN60ES

Bore Diameter	60 mm
d	60 mm
B	44 mm
b	46 mm
d2	130 mm
d4	75 mm
d6	120 mm
dk	80 mm
h1	130 mm
l3 min.	59 mm
l4 max.	200 mm
l7 min.	65 mm
r min.	1 mm
C1	50 mm
Thread (G)	M58 × 1,5
Angle	6 °
Weight	6,49 Kg
Basic dynamic load rating (C)	245 kN

SIRN60ES Bearing 2D drawings and 3D CAD models